



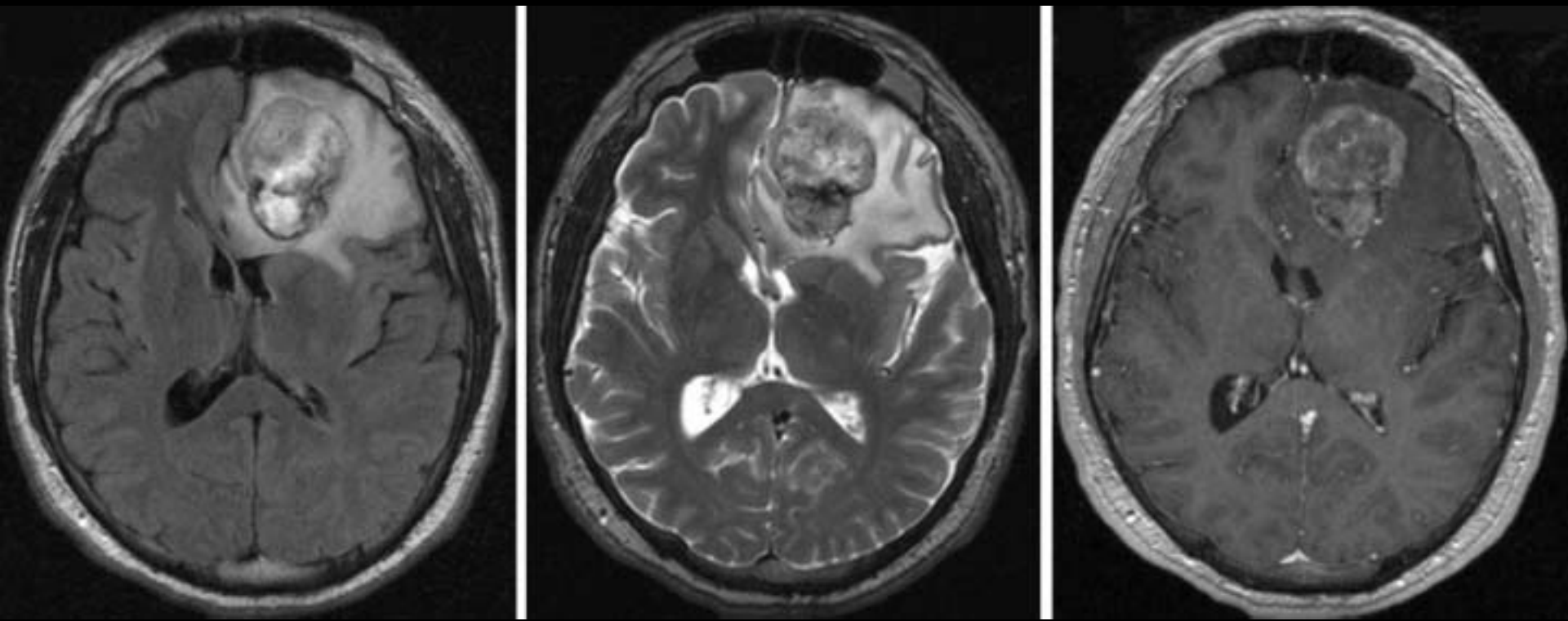
## Case 5

LA Path Society, Los Angeles, March 13, 2007

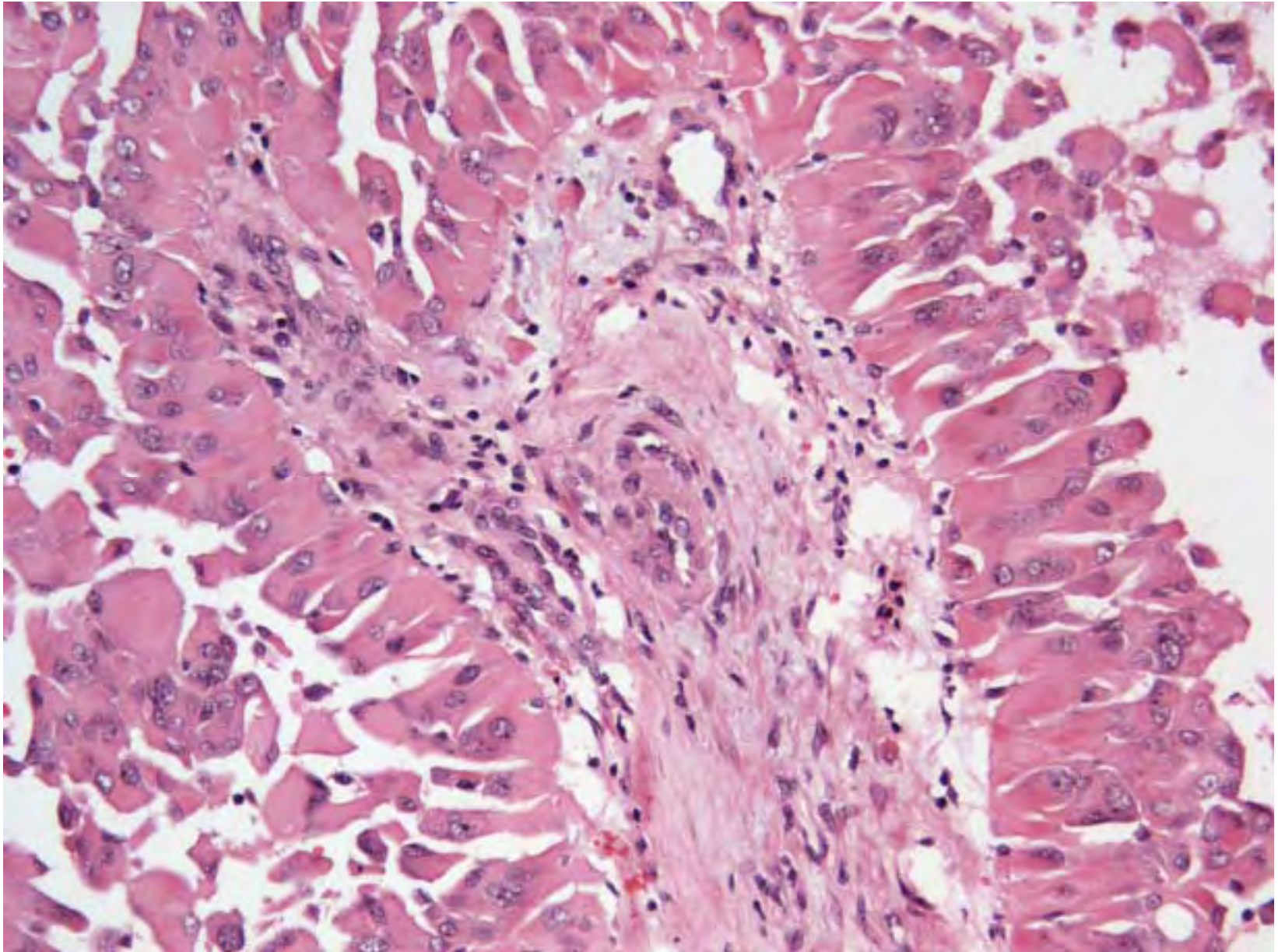
## Case #1

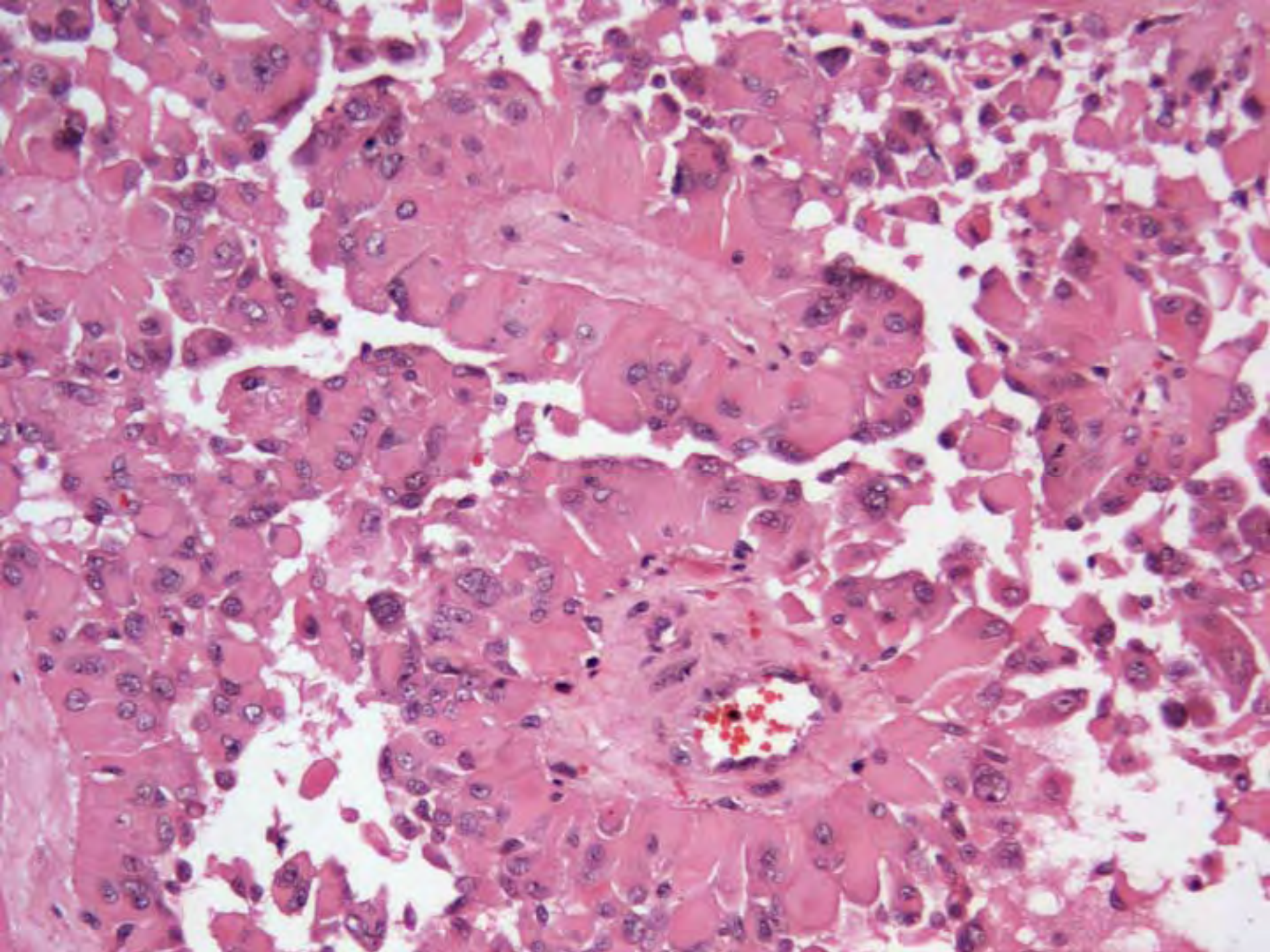
♠ A 33-year-old man with complains of headache for about 2 months developed right-sided weakness and blurred vision.

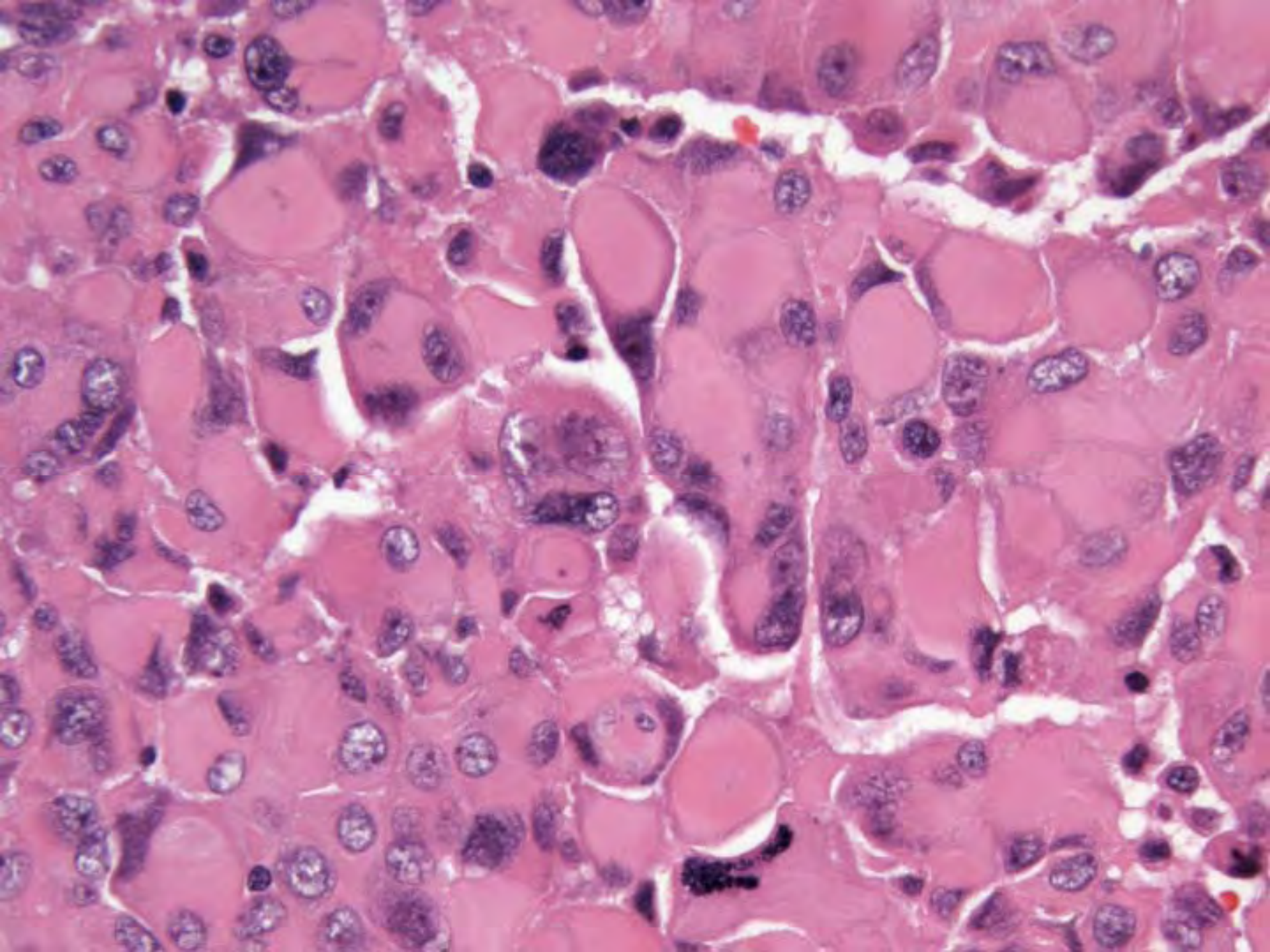
♠ MRI revealed 50 mm in the greatest dimension left frontal mass, adjacent to leptomeninges of the orbit.

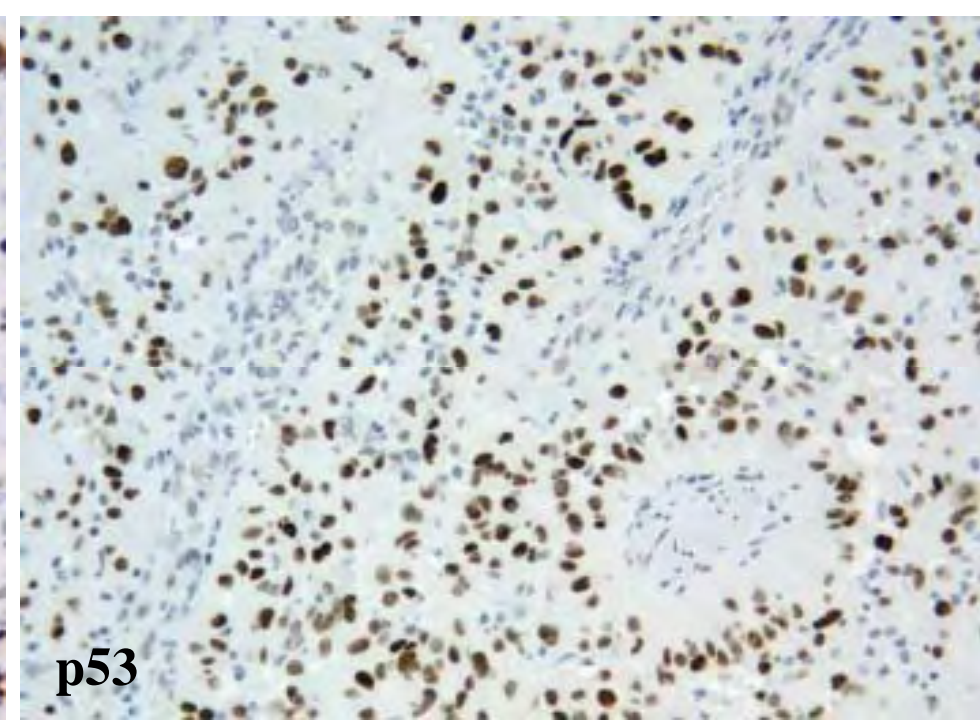
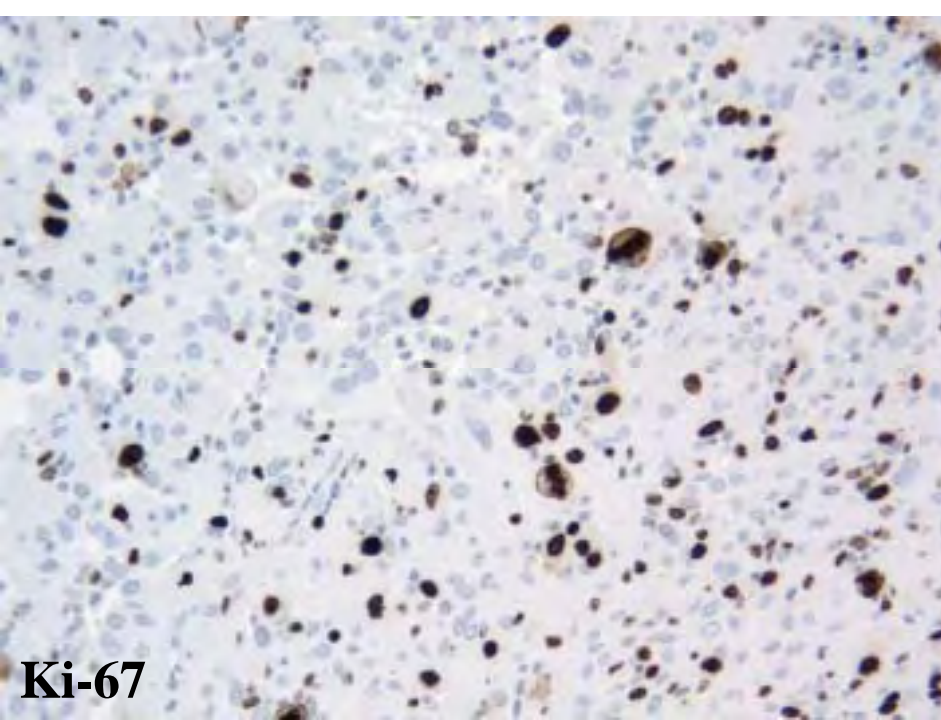
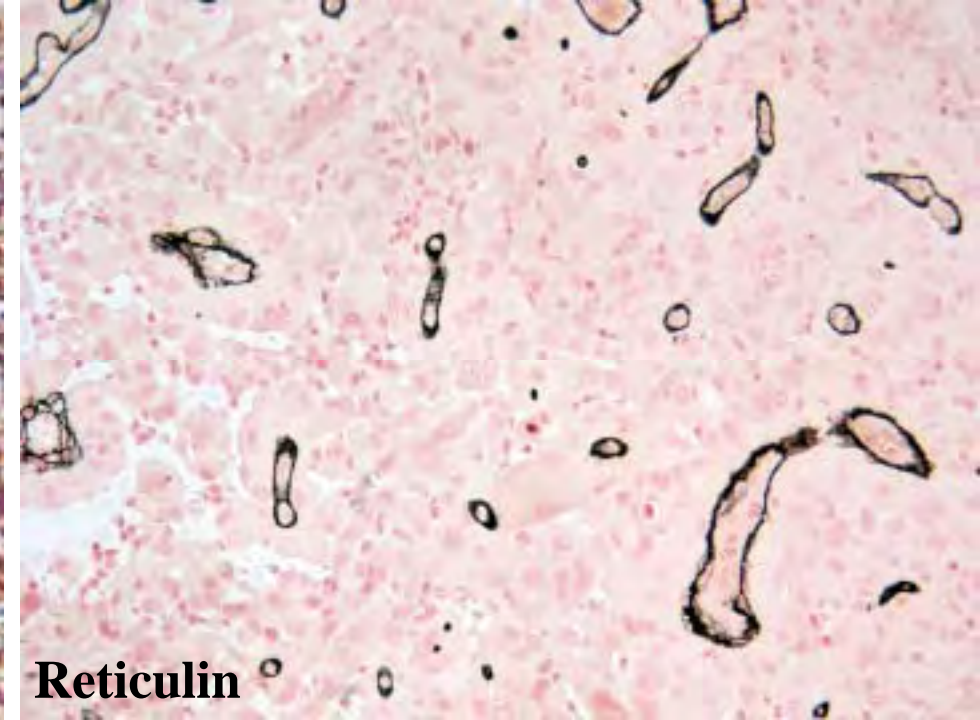
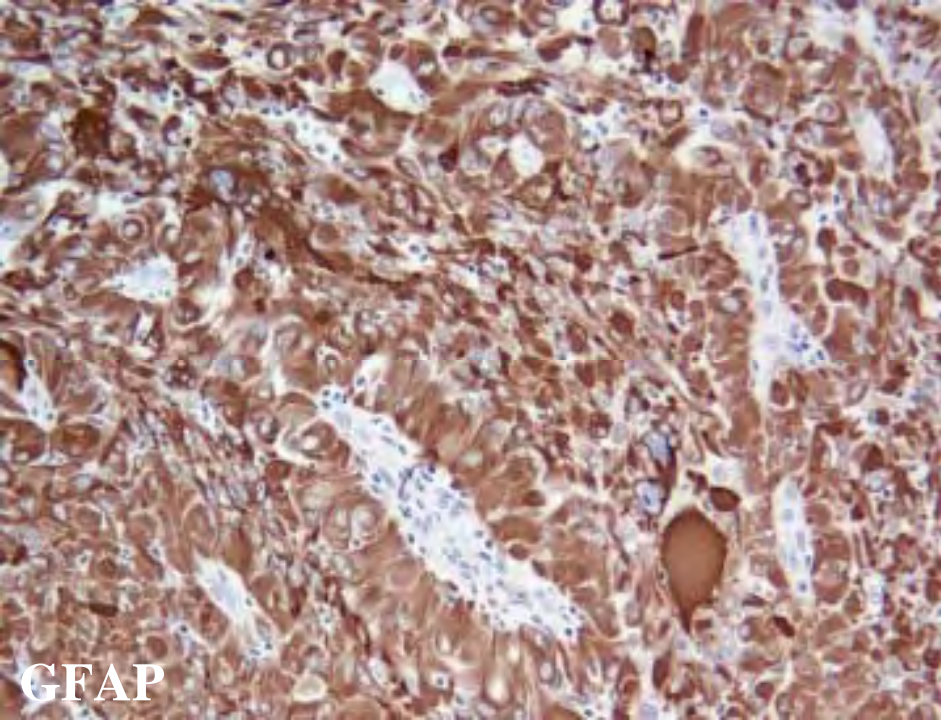


- ♣ Intra-operatively, the tumor was strawberry colored, fleshy and edematous.
- ♣ Gross total resection was achieved.









## Immunohistochemical findings in case #1

GFAP	positive
Vimentin	positive
Synaptophysin	negative
EMA	negative
AE1/AE3	negative
SMA	negative
p53	positive
Ki-67	15%

## Conclusions:

☺ Diagnosis tumor#1: **Astroblastoma**, malignant

Diagnostic EM features:

<b>Findings:</b>	<b>Astroblastoma</b>
<b>Polarization</b>	Separation of Apical from Basolateral by junctional complexes. Basal lamina abuts blood vessels.
<b>Apical surface</b>	No cilia. Branching ruffles.
<b>Basolateral surface</b>	Either Socket-like contact or extensive plications by adjacent congruent ruffles.
<b>Contacts</b>	Extensive junctional complexes: tight, gap and adhesive.