

## Inflammatory Skin Pathology

David Frishberg, M.D., Cedars Sinai (moderator)  
Bonnie Balzer, M.D., Ph.D., Cedars Sinai  
David Cassarino, M.D., Ph.D., UCLA  
G. Peter Sarantopoulos, M.D., UCLA  
Joseph Hillman, M.D., UCLA

Los Angeles Society of Pathologists  
April 8, 2008

## Acknowledgements

- ▶ A. Bernard Ackerman. *Histologic Diagnosis of Inflammatory Skin Diseases. An Algorithmic Method Based on Pattern Analysis.*
- ▶ John Muir, Tosh Gregg, and Peter Aschwanden. *How to Keep Your Volkswagon Alive. A Manual of Step by Step Procedures for the Compleat Idiot.*

## Inflammatory Skin Pathology

- ▶ Introduction – Dr. Frishberg
- ▶ Case # 1 – Dr. Frishberg
- ▶ Case # 2 – Dr. Cassarino
- ▶ Case # 3 – Dr. Sarantopolous
- ▶ Case # 4 – Dr. Hillman
- ▶ Case # 5 – Dr. Balzer

## Inflammatory Dermatopathology by Pattern and Algorithm

- ▶ Steps
  - Categorize the pattern
  - Assess the inflammatory cell population
  - Look for specific findings that direct the algorithm as far as it can be taken (analogy to SOAP notes in clinical medicine)
  - Correlate the histologic assessment with known clinical information

## Inflammatory Dermatopathology by Pattern and Algorithm

- ▶ Superficial Perivascular Dermatitis
- ▶ Superficial and Deep Perivascular Dermatitis
- ▶ Nodular and Diffuse Dermatitis
- ▶ Panniculitis
- ▶ Vasculitis
- ▶ Folliculitis and Perifolliculitis
- ▶ Intraepidermal Vesicular and Pustular Dermatitis
- ▶ Subepidermal Vesicular Dermatitis

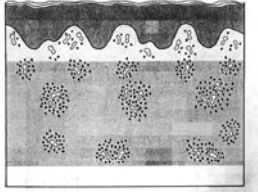
## Inflammatory Dermatopathology by Pattern and Algorithm

- ▶ Superficial Perivascular Dermatitis
  - No epidermal involvement
  - Interface
  - Ballooning
  - Spongiotic
  - Psoriasiform



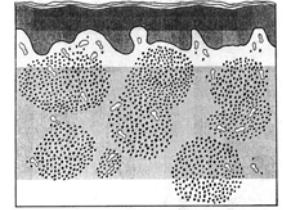
## Inflammatory Dermatopathology by Pattern and Algorithm

- ▶ Superficial and Deep Perivascular Dermatitis
  - No epidermal involvement
  - Interface
  - Ballooning
  - Spongiotic
  - Psoriasiform



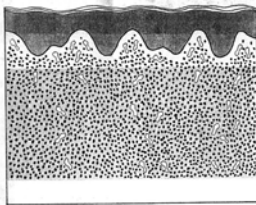
## Inflammatory Dermatopathology by Pattern and Algorithm

- ▶ Nodular Dermatitis
  - Lymphocytes predominate
  - Neutrophils predominate
  - Neutrophils, eosinophils, and plasma cell prominent
  - Eosinophils prominent
  - Histiocytes predominate



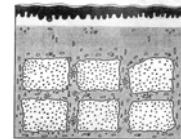
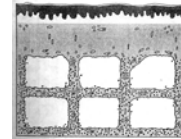
## Inflammatory Dermatopathology by Pattern and Algorithm

- ▶ Diffuse dermatitis
  - Lymphocytes predominate
  - Neutrophils predominate
  - Neutrophils, and eosinophils prominent
  - Plasma cell prominent
  - Mast cells predominate
  - Histiocytes predominate



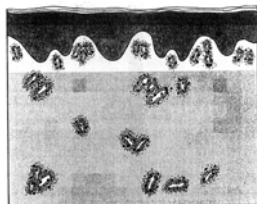
## Inflammatory Dermatopathology by Pattern and Algorithm

- ▶ Panniculitis
  - Mostly septal
  - Mostly lobular



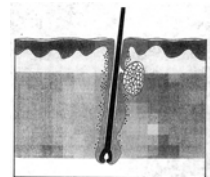
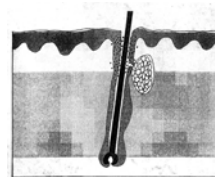
## Inflammatory Dermatopathology by Pattern and Algorithm

- ▶ Vasculitis



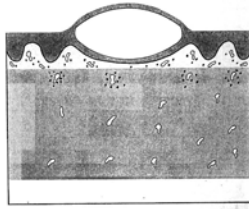
## Inflammatory Dermatopathology by Pattern and Algorithm

- ▶ Folliculitis and perifolliculitis



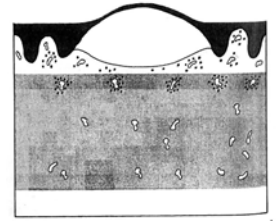
## Inflammatory Dermatopathology by Pattern and Algorithm

- ▶ Intraepidermal Vesicular and Pustular Dermatitis



## Inflammatory Dermatopathology by Pattern and Algorithm

- ▶ Subepidermal Vesicular Dermatitis



## Patterns of cases discussed tonight

