

Case Presentation

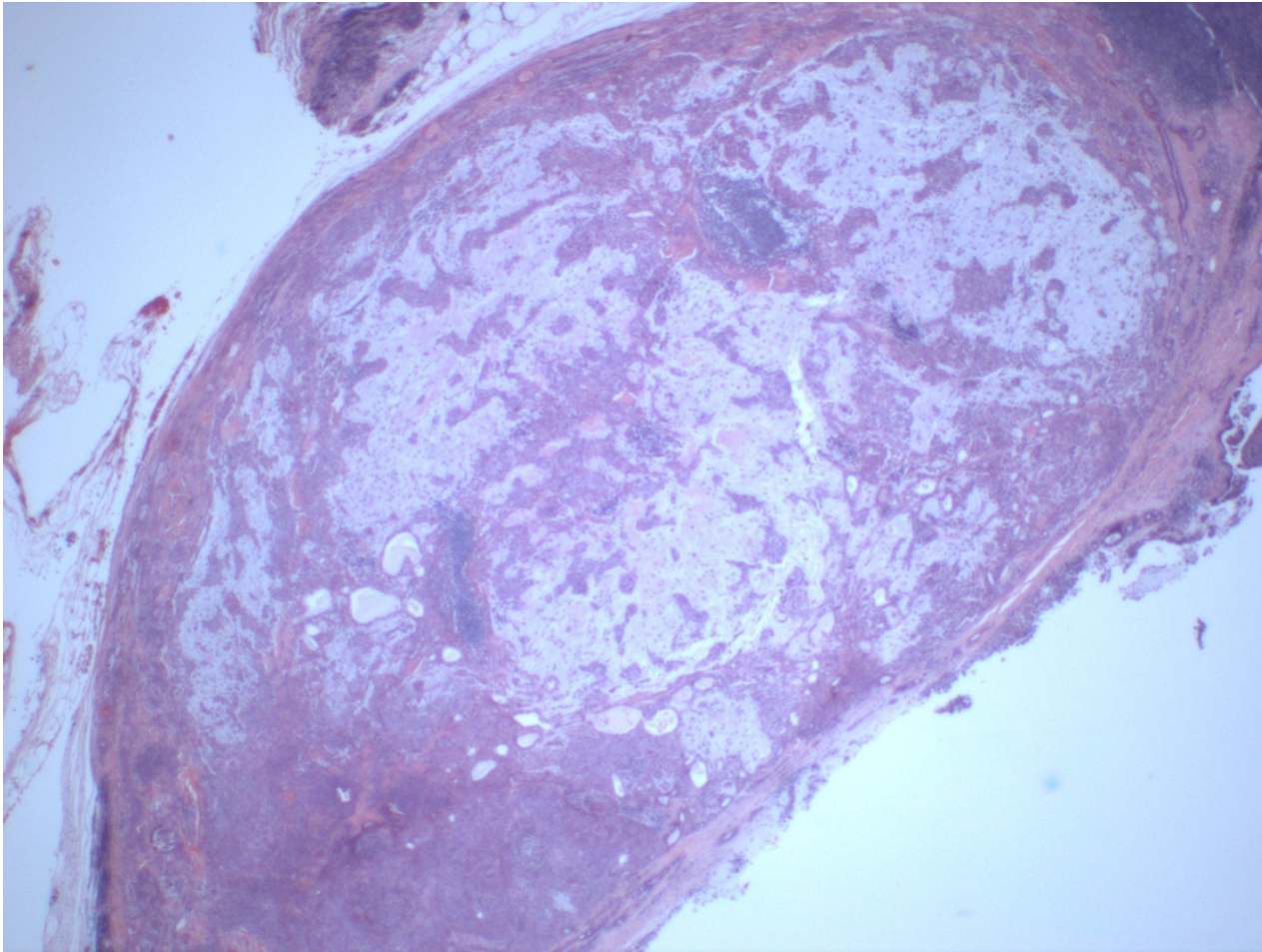
Jessica Chan, MD

UCLA Department of Pathology
and Laboratory Medicine

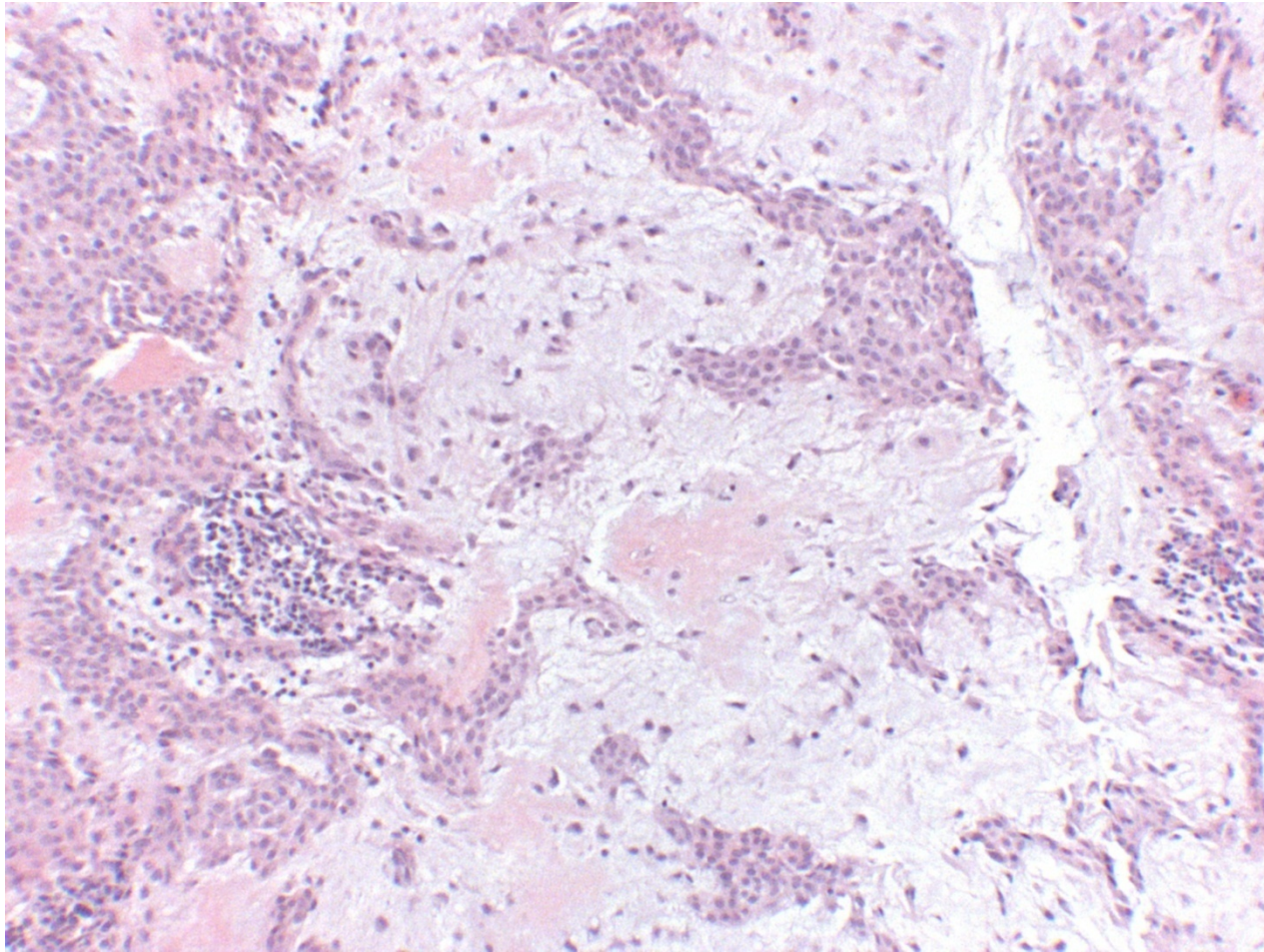
Clinical history

- 43 year-old female with slowly enlarging indurated mass on her left arm

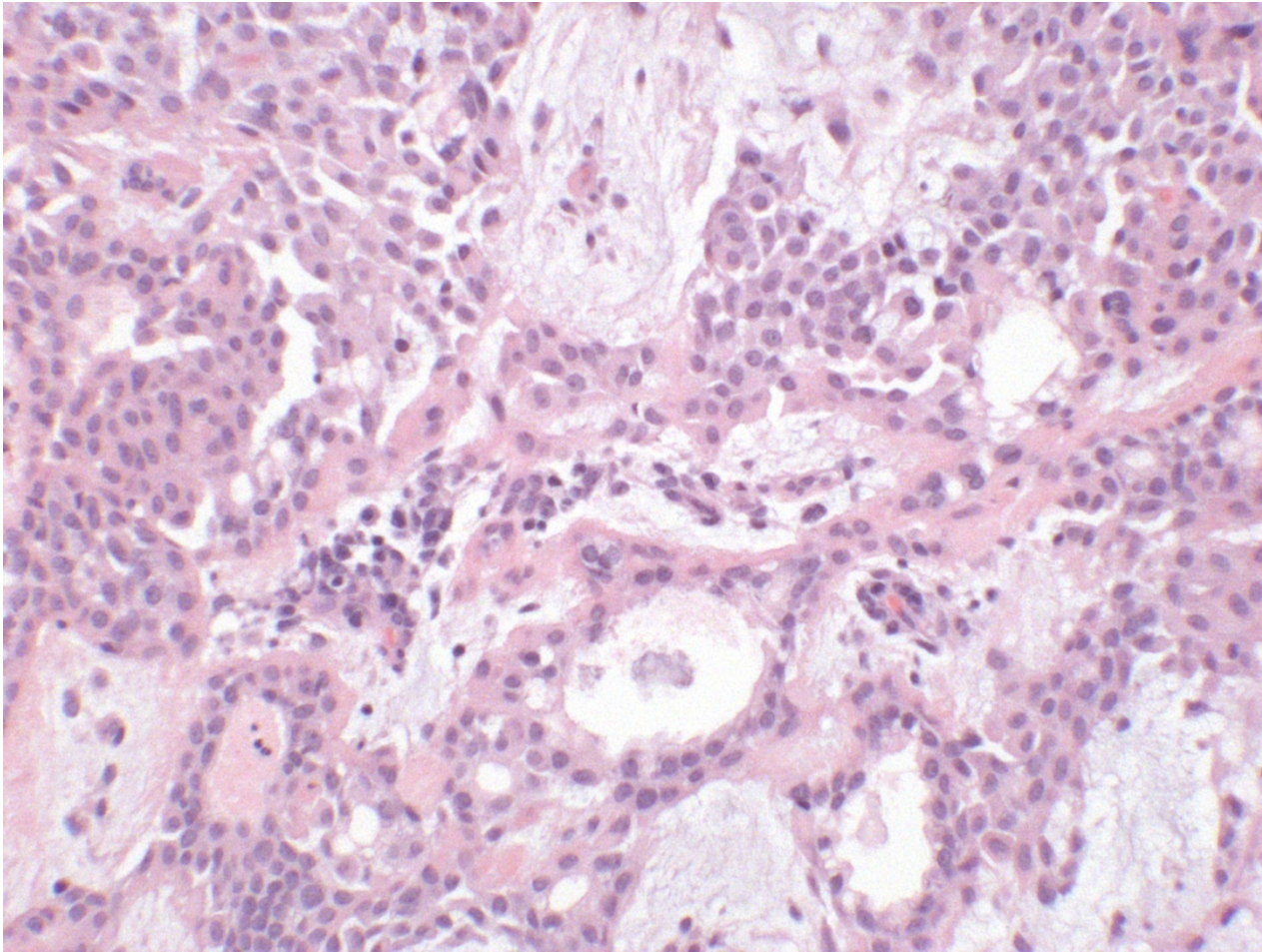
Excisional biopsy (2x magnification)



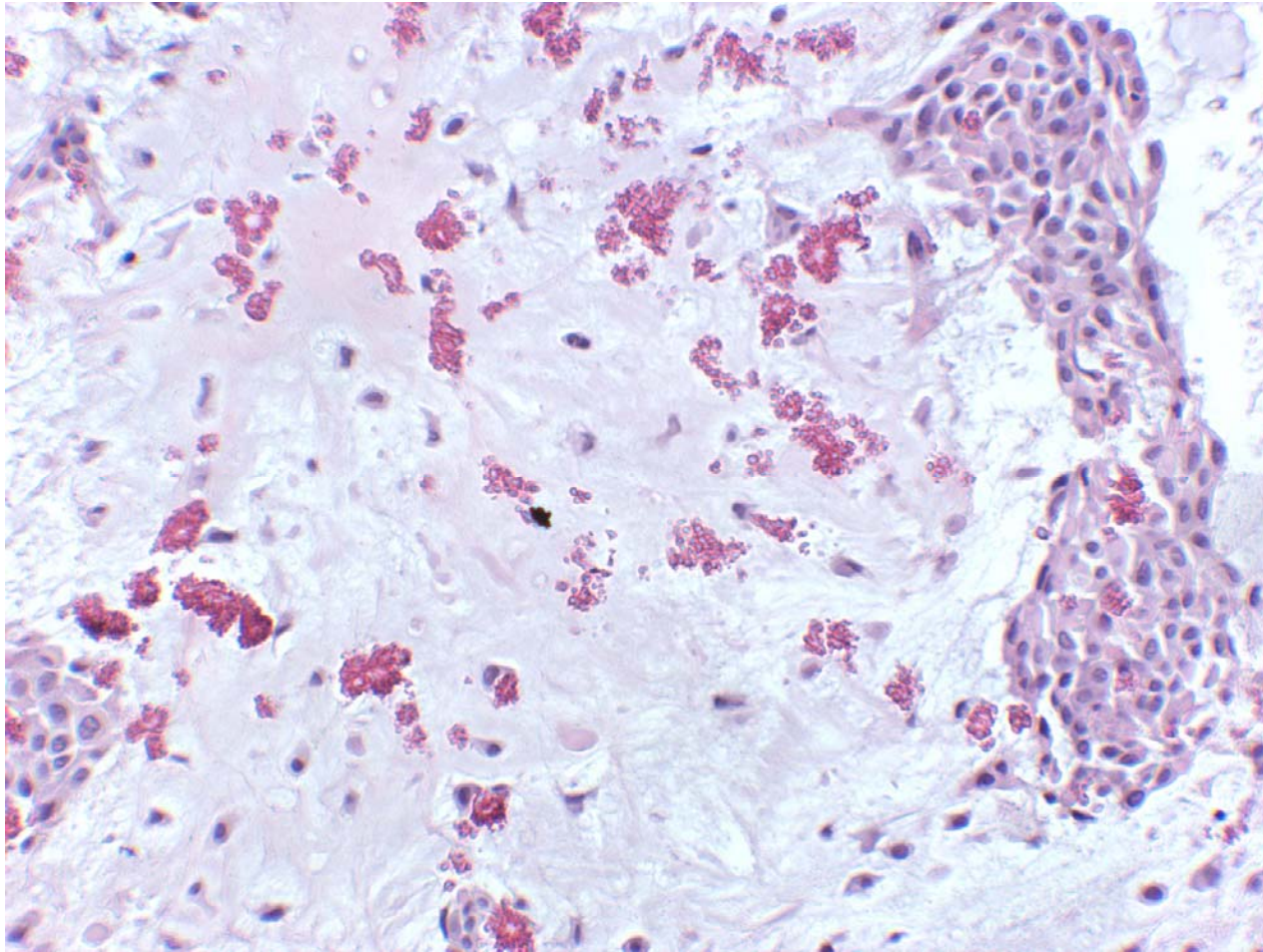
Excisional biopsy (10x magnification)



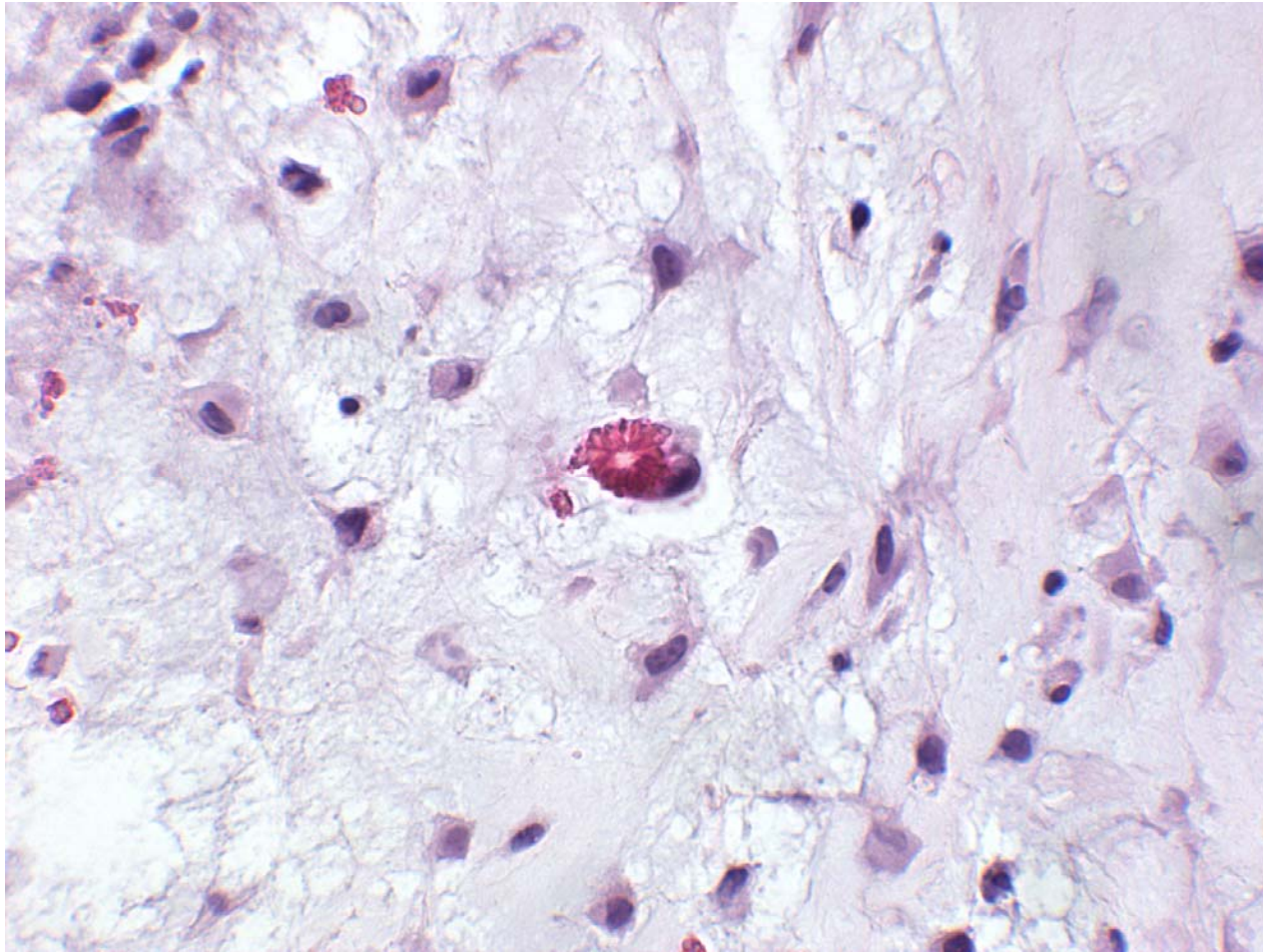
Excisional biopsy (20x magnification)



Excisional biopsy (20x magnification)



Excisional biopsy (40x magnification)



Immunohistochemistry

- Focal positive staining with Pankeratin
- Focal positive staining with S-100 protein
- Low Ki-67 nuclear proliferative rate (overall <5%)

What is your diagnosis?